

Pinery Pipeline



November/December 2006
303.841.2797

Pinery Water & Wastewater District -

Board Approves Changes to Water and Sewer Rates

After much discussion and analysis, consultation with professional consultants and a public meeting at Sagewood Middle School on September 7, 2006, the District Board approved changes to water and sewer rates at the October Board meeting. The new rates for the lower two tiers (bolded in the table below) go into effect January 1, 2007 and will first appear in water bills received in April and May. The District has experienced increases in energy, chemicals, insurance and other costs that must be recovered from these rates. In addition to changes in the residential rates, the Board has also increased the rates charged to other customers as well. One of the key features of the new sewer rates is that an additional 5,000 gallons of water usage is allowed before the highest sewer rate takes effect. This provides for some outdoor winter water use to maintain trees and shrubs without resulting in an increase in sewer rates.

Water Rates		Rate per kgal	
	Consumption Blocks	2006	2007
Block 1	0-6,000	\$33.00	\$38.00
Block 2	6,001 - 40,000	\$1.75	\$1.85
Block 3	40,001 - 60,000	\$2.81	\$2.81
Block 4	60,001 - 100,000	\$3.50	\$3.50
Block 5	100,001 - 120,000	\$4.98	\$4.98
Block 6	> 120,000	\$9.81	\$9.81

Sewer Rates			
2006		2007	
0 - 6 kgal	\$36	0 - 6 kgal	\$40
> 6 - 15 kgal	\$50	> 6 - 20 kgal	\$56
> 15 kgal	\$70	> 20 kgal	\$70

**Calculation of sewer rate is based on winter water usage (Jan-Feb or Feb-March)*



So, What's Going on at the WWTP?

Under construction again, the current expansion at the wastewater treatment facility started in March 2006. This is a hydraulic expansion increasing the total treatment capacity from one million to two million gallons per day. Over half of this new capacity will be used by our two out-of-district customers (Cobblestone Ranch and Canyons South). The developers of these two subdivisions have contributed \$8,100,000 to the District for our treatment plant expansion and pay cost plus 25% for service. The remainder of the capacity is necessary

for the continued growth within our own District boundaries.

Additionally, this expansion will provide much needed flexibility and redundancy to the wastewater plant operation. The existing plant consists of a single treatment train with no redundancy. This has created difficulty in taking units out of service for routine maintenance.



Upon completion of this project, we will have two

treatment trains allowing us to more easily perform periodic maintenance inside the tanks and still provide for uninterrupted treatment. This redundancy also provides more operational flexibility in meeting our very stringent discharge permit.

Lift Stations

The District currently operates three sewage lift stations. These facilities pump sewage from low spots in the Pinery to the gravity sewer system that runs to the wastewater treatment plant. Our lift stations date from the early 1970's and they are in need of upgrades to comply with current regulatory requirements. As we evaluated the upgrades that are needed, we also explored ways to eliminate the lift stations. The Colorado Golf project provided an opportunity for us to extend sewer service downhill from the lift stations, through the Colorado Golf project, and back into our sewer system. During the evaluation it was evident that construction of this sewer line was the least expensive alternative with the added benefit of eliminating the continued operation and maintenance costs of the lift stations. Construction of the sewer line is already underway and should be completed by the middle of next year.

Out of District Sewer Service

The District has agreements to provide sewer service to two areas outside of the District. These two areas are the Cobblestone Ranch development and the Canyons South development. Both of these areas are being provided water by the Town of Castle Rock. The developers of these two areas have made significant contributions to the expansion of our wastewater treatment plant so that we can provide service to them.

You've Got Questions . . .

We've Got Answers!

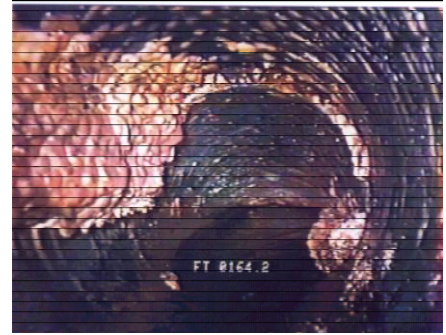
I see white vans in my neighborhood marked "DRC Construction" opening the manholes out in front of my house. What are they doing?

DRC does the annual video inspection and cleaning services in the District's sewer collection system. The goal of this annual program is to inspect approximately 1/4 of the collection system per year, plus any additional trouble spots from previous years. This program assists the District in identification and correction of problem areas prior to system backups. Routine cleaning of sewer mains assists in prevention of sewer main stoppages by removing accumulated solids.

What problems are most common in sewers?

In a strictly residential area such as the Pinery, we see grease build up, tree roots, and general deterioration due to aging. We also see sewer mains damaged by other utility companies doing repairs or upgrading their systems. DRC uses high pressure water nozzles to bust out the grease build up and

special cutter tools to cut out the roots in the mains. The other damages are assessed for immediate or future repair, depending on the severity.



Speaking of roots, what about roots in my sewer service line?

By District Regulation, maintenance of a service line is the homeowner's responsibility. However, we have some suggestions and tips:

- ✓ When calling a plumber to clean your sewer line, include a video inspection. What you "see" will save you money in the long run.
- ✓ If your plumber does come up with roots as a problem, please do not use any root killers containing copper sulfate. Copper is a pollutant the wastewater treatment process does not take out. The District has a safe and effective product on sale in our office. Give us a call!

Cherry Creek Basin Water Quality Authority

The Cherry Creek Basin Water Quality Authority (CCBWQA) was created by an act of the state legislature in 1985. The State Water Quality Control Commission sets water quality standards for Cherry Creek Reservoir and the CCBWQA takes actions to achieve those water quality standards. The funding for the CCBWQA comes from property taxes, fees charged to users of Cherry Creek State Park, and fees charged to wastewater dischargers. One of the actions taken by these organizations is to set the discharge standards for the Wastewater Treatment Plants on Cherry Creek. Because of the nature of the Cherry Creek basin, we have extremely stringent discharge limits from our wastewater treatment process. We are proud of our ability to meet these discharge limits and we have been recognized by the EPA for our excellence in operation and maintenance. However, treating to this very low level of pollutants makes our treatment process more expensive than if we were located elsewhere.

Happy Holidays!

